



a **space** where **ideas** and **discussions** can go deeper.



## Is a small space designed for deeper thinking.

Inspired by the quietness of deep space, it creates a calm and private environment for focus, conversations, and meetings away from the noise of a busy workplace.

Designed to filter out the everyday distractions of the modern workplace, DeepSpace is your premium acoustic sanctuary. Engineered with specialized tempered glass and advanced soundproofing for an exceptional 28dB noise reduction, it provides a highly private and ergonomic haven to help you reclaim focus and perform uninterrupted, high-value work, with versatile placement.



# What's the employee's problem ?

"The Hidden Costs of the Open-Plan Office: Acoustic Distractions and Privacy Deficits"

53%

53% of employees say their office provides adequate acoustic comfort

45%

Only 45% of employees say their office allows them to work in isolation

45%

Only 45% of employees say their office gives them a sense of privacy

35%

Only 35% of respondents confirm that the office layout allows them to protect the confidentiality of information displayed on a screen

**Employee Frustration:** Open-plan noise eliminates workspace privacy and degrades conference call quality.

**Productivity Drain:** Constant background noise shatters focus, lowering efficiency and driving up error rates.

**Reputational Risk:** Sound leakage during critical meetings compromises sensitive negotiations and damages professional credibility.

## Why the Open-Plan Fails Our Focus: The Science of Workplace Distractions

**66%** LESS PRODUCTIVE

Office workers are 66% less productive in open-plan environments compared to working in private spaces.

— *Julian Treasure, The Sound Agency*

**25** minutes TO REFOCUS

After an interruption, it takes an average of 25 minutes to fully refocus and return to the original task.

— *Gloria Mark, University of California, Irvine*

**48%** MEMORY IMPAIRMENT

Employees exposed to high-decibel noise experience a 48% decline in short-term memory performance compared to working in quiet environments.

— *Journal of Applied Psychology*



Polyester Acoustic Panel  
(car interior style fabric finish)

Acoustic Material

Carbon Plastic Panel

### DEEPSPACE NOISE REDUCTION VISUALIZATION: HOW ACOUSTIC PANELS WORK

External Office Noise (~60 dB)

Internal Sanctuary:  $\leq 30$  dB



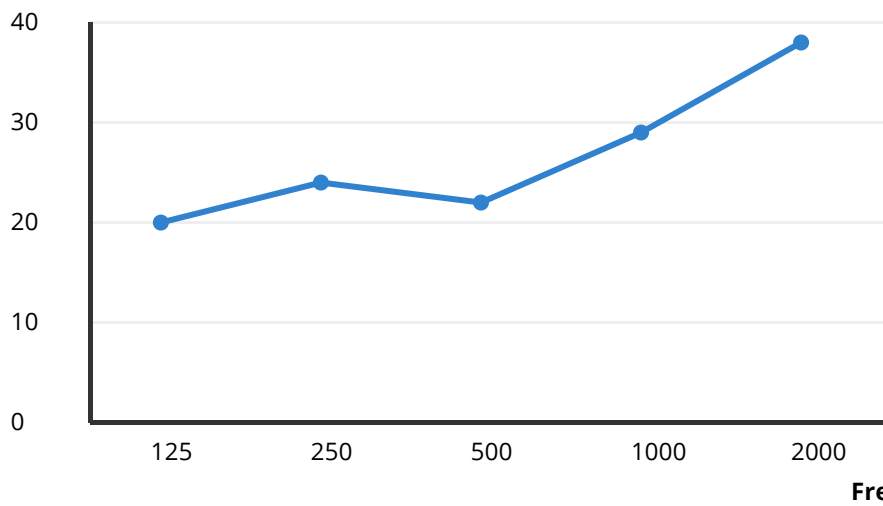
Acoustic Performance by Frequency Range

125Hz:	1000Hz:	4000Hz:
-23 dB reduction	-29 dB reduction	-38 dB reduction



## DeepSpace Achieve $< 30$ dB Environment

NR (dB) Noise Reduction (NR) vs Frequency (Hz)



### Performance Metrics

- Maintain interior sound level below 30 dB
- Ensure consistent acoustic protection during routine office conditions.

# RTIT-M System : Core Intelligent Features

### Smart Booking & Facility Management

Intuitive online reservation system. Access real-time availability checks, flexible scheduling for multiple units, and automatic reminders.

### Integrated App Control

Complete device control via our dedicated smartphone app. Securely unlock the pod, adjust interior settings like lighting, and ventilation with a single tap.

### Secure Cloud Platform

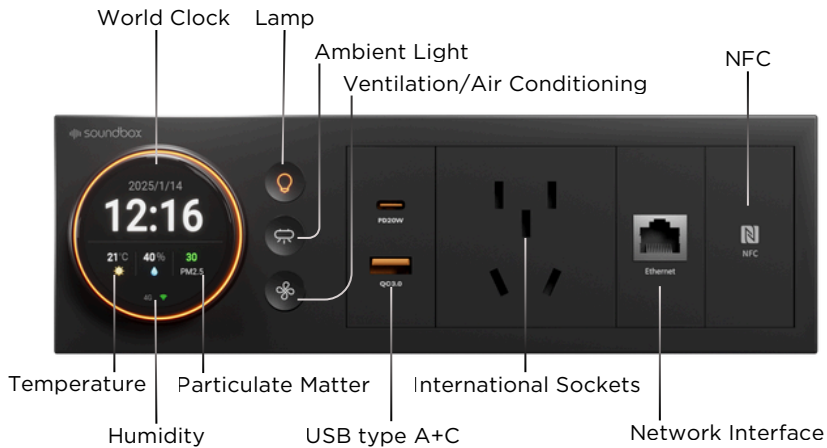
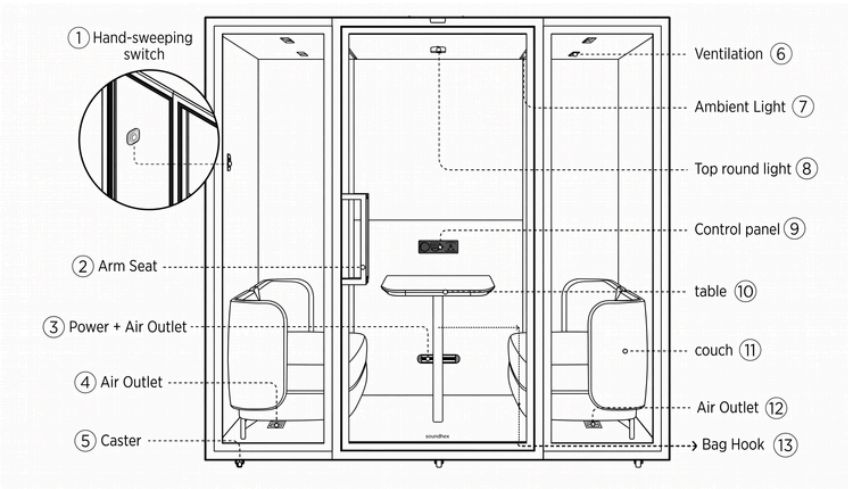
Centralized device administration. Remote monitoring, usage analytics dashboard, and automatic software updates ensure peak performance across your fleet.

### Adaptive Workspace Controller

Intelligent interior optimization. The pod automatically adjusts climate control and lighting based on occupancy, providing a customized, comfortable environment.

### Real-time Data Synchronization

Instantaneous data sync across all authorized devices and the secure cloud platform, ensuring data accuracy and seamless cross-platform functionality.



# AI Intelligent Digital Matrix System

- Clock can be easily adjusted when connected to the internet.
- Light and fans can be dimmable.
- A variety of regional socket options are available to accommodate users worldwide.
- NFC to connects the system to the phone's operating system with a simple touch.

# One Pod, Endless Possibilities

Transform your open office with an acoustic space designed for every need.

## Focus & Solo Work

A quiet, distraction-free environment for deep concentration, writing, and individual creative work.

## Group Collaboration

Comfortably supports brainstorming and small-team conversations without disrupting neighboring desks.

## Virtual Meetings & Calls

Optimized sound and lighting for professional sales calls, video conferences, and podcast recording.

## Recharge & Rest

A calm, isolated sanctuary for employees to step away from open-plan noise and decompress.

## Rapid, Hassle-Free Installation

Modular construction allows you to add fully functional meeting spaces in a single afternoon-no permits, no renovation, no downtime.

## Total Confidentiality

A highly secure, soundproofed space for sensitive HR discussions, negotiations, and private consultations.

## A Comparative Parameters



### Conventional Meeting Room

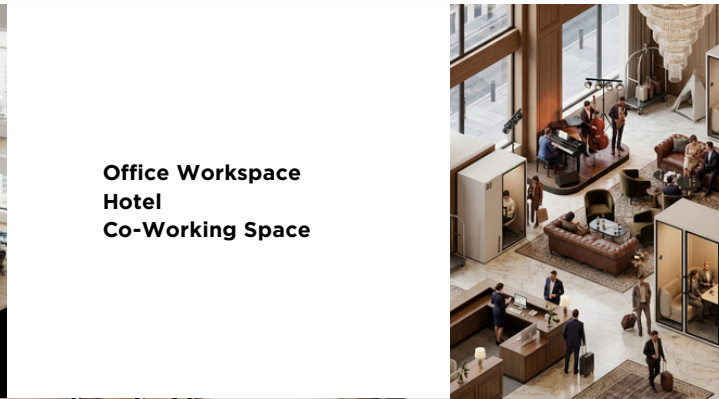


<b>Flexibility</b>	High modular
<b>Renovation Cost</b>	Low
<b>Acoustic Benefit</b>	Up to 90% /28db
<b>Speed of Installation</b>	Fast (1-4 hour)
<b>Relocatability</b>	100% Reusable
	Full knock-down system for office relocation.
<b>Ventilation &amp; Air Quality</b>	Yes (Smart Active)
<b>Integrated Smart</b>	Yes
<b>Usage Versatility</b>	High (any kind of meeting)

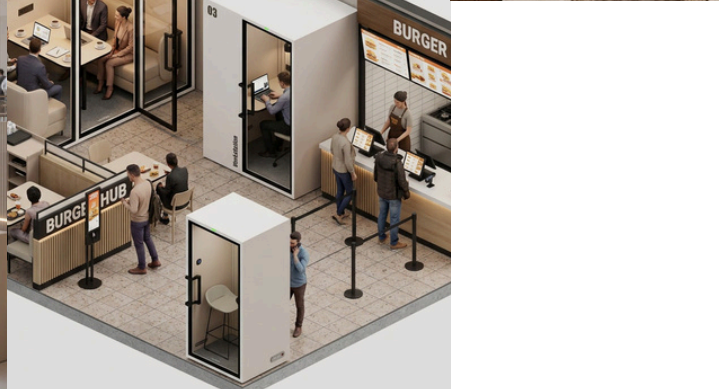
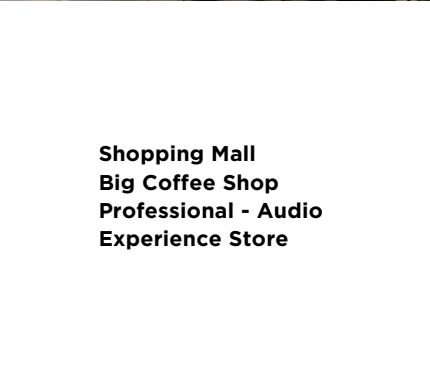
<b>Flexibility</b>	Low (Fixed)
<b>Renovation Cost</b>	Extra High
<b>Acoustic Benefit</b>	60-70% (depends on material)
<b>Speed of Installation</b>	4-5 weeks
<b>Relocatability</b>	Non-Reusable & Sunk-cost
<b>Ventilation &amp; Air Quality</b>	Manual
<b>Integrated Smart</b>	Custom
<b>Usage Versatility</b>	High (any kind of meeting)



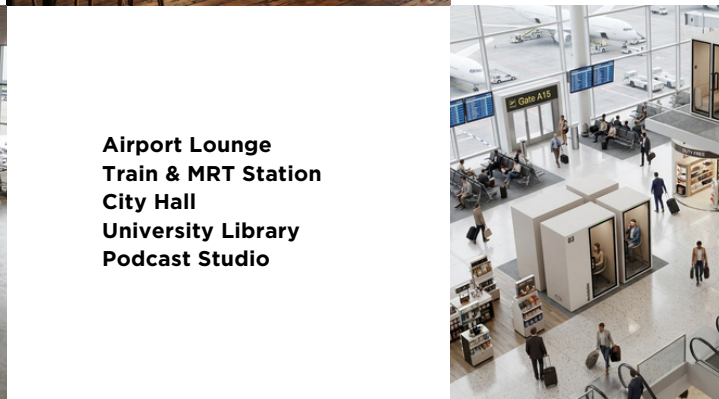
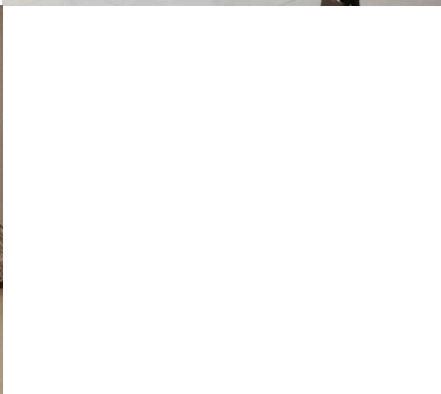
# DeepSpace Placement



Office Workspace  
Hotel  
Co-Working Space



Shopping Mall  
Big Coffee Shop  
Professional - Audio  
Experience Store



Airport Lounge  
Train & MRT Station  
City Hall  
University Library  
Podcast Studio

# Type and Accessories

## ART-S



**Product Size:**

W 1000 mm x D 940 mm x H 2100 mm

**Interior Size:**

W 890 mm x D 825 mm x H 1960 mm

**Details:**

Gross weight: 255 kg

Furniture: Integrated Table & Matching Stool

Color: Pale Gray

Door: Laminated glass & magnetic door

**Material:**

Tempered glass, carbon fiber, aluminum

**Voltage:**

100-240 V

## ART-SM



**Product Size:**

W 1100 x D 1040 x H 2100 mm

**Interior Size:**

W 990 x D 925 x H 1960 mm

**Details:**

Gross weight: 319 kg

Furniture: Table & sofa

Color: Pale Gray

Door: Laminated glass & magnetic door

**Material:**

Tempered glass, carbon fiber, aluminum

**Voltage:**

100-240 V

## ART-M



**Product Size:**

W 1550 x D 1240 x H 2100 mm

**Interior Size:**

W 1440 x D 1125 x H 1960 mm

**Details:**

Gross weight: 323 kg

Furniture: Table & chair

Color: Pale Gray

Door: Laminated glass & magnetic door

**Material:**

Double tempered glass, carbon fiber, aluminum

**Voltage:**

100-240 V

## ART-ML



**Product Size:**

W 2200 x D 1240 x H 2100 mm

**Interior Size:**

W 2090 x D 1125 x H 1960 mm

**Details:**

Gross weight: 416 kg

Furniture: Table & sofa

Color: Pale Gray

Door: Laminated glass & magnetic door

**Material:**

Tempered glass, carbon fiber, aluminum

**Voltage:**

100-240 V

## ART-L



**Product Size:**

W 2200 x D 1640 x H 2100 mm

**Interior Size:**

W 2090 x D 1525 x H 1960 mm

**Details:**

Gross weight: 474 kg

Furniture: Table & sofa

Color: Pale Gray

Door: Laminated glass & magnetic door

**Material:**

Tempered glass, carbon fiber, aluminum

**Voltage:**

100-240 V



**Further Information:**

**PT Inovasi Sarana Grafindo**  
 Jl. Lenteng Agung Raya No. 15  
 Jakarta Selatan 12630 Indonesia

**Whatsapp.**  
 0815-1028-2828

**Email.**  
 cs@innograph.com

**www.innograph.com**