

# InnoGRAPH Kiosk Solution



**PT. Inovasi Sarana Grafindo (InnoGRAPH)**  
Jl. Lenteng Agung No. 15 (Jl. Baung No. 2), Jakarta  
Selatan, 12610, Indonesia Telp: +62 21 7883 1075  
Fax: +62 21 7883 1692 Email: cs@innograph.com

[www.innograph.com](http://www.innograph.com)

## About InnoGRAPH



InnoGRAPH has been providing solutions to the visual communications industry for more than 29 years, ranging from large format digital printing to digital signage. We offer the development of various products that accommodate various industrial needs, from portable promotional display products to digital signage development and innovation with the cloud-based DigisignPlay content management system (CMS) solution. Our reliable team in the field of digital signage also have various kiosks as reliable solutions to the customers.

# **Why Choose A'la Carte for Kiosk?**

## Kiosk 21.5 Inch Table A'la Carte CONFIGURATION Guide

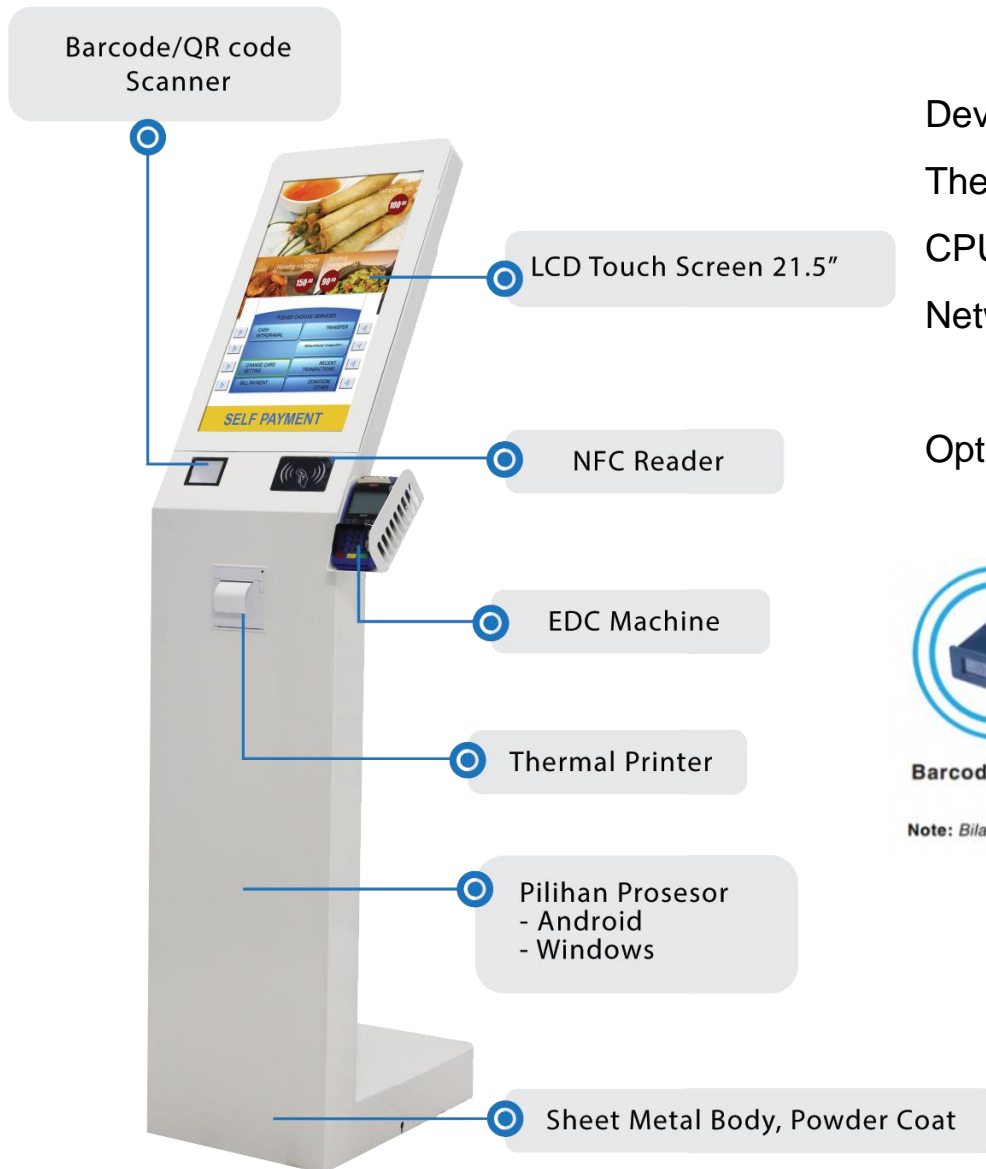
- Choose the Operating Systems
- Choose the Devices according to needs and user requirements
- Price will be quote based on configuration.
- EDC Holder available, EDC machine provided by customer, related to financial payments systems.
- E-KTP Reader, related to Ditjen Dukcapil RI.



# Package & Options for Self Service Kiosk Solution

## ➤ Platform with A'la Carte devices with 21.5 Screen

(It can be selected according to application needs)



Devices come with main platform:

The equipment that includes the main body and

CPU processor is touchscreen 21.5 inch

Networking: WIFI, Ethernet RJ45.

Optional equipments:



Barcode Scanner



NFC Reader



EDC Machine



Thermal Printer



E-KTP Reader

**Note:** Bila ada kebutuhan khusus devices, bisa diusulkan.

## SPECIAL DEVICES - OPTION

(needs to be linked with the managing agency)

### E-KTP Reader

- automated validation and semi-automatic form filling, consisting of a fingerprint scanner and E-KTP reader. Managed by a registered vendor, with all usage overseen by DITJEN DUKCAPIL.



### EDC Machine :

- Used for payment processing, supplied by several vendors, and linked to financial institutions (banks, credit cards, payment systems).



# Kiosk Product Variant

# DIGISIGN SELF SERVICE KIOSK

21.5"  
Capacitive  
Touchscreen



**Self-service Kiosk solutions** for various current and future needs. Developed to enhance public services in Indonesia and various areas. Used for various community services, ordering, payments, queuing, and online process automation, packaged as a platform development for applications to be added by software developers.

## Benefits of the SSK System

- Implementation speed.
- Service reliability is significantly better.
- The public (service users) is satisfied with the service.
- Customers and software developers are free from service issues.

Equipped with a 21.5-inch portrait capacitive touchscreen, and two processor options: Android and Intel i5, along with the Windows 10 operating system, as well as Wi-Fi.







21,5"

## DigiSIGN Self Services Kiosk Android



Simple usage for queue management and restaurant menu ordering.

- Android OS
- Touchscreen interface
- 80 mm Thermal Printer
- EDC Holder



21,5"

## DigiSIGN Self Services Kiosk Windows



Simple usage for queue management and restaurant menu ordering.

- INTEL i5 dan Microsoft Windows 10 IOT  
QR Scanner
- 80 mm Thermal printer
- EDC Holder



21,5"

## DigiSIGN Self Services Kiosk

- Available for Android and Windows with a 21.5-inch portrait display.
- Must be configured according to user needs.
- The device is integrated with the main platform, options include: OS, 21.5-inch touchscreen, Wi-Fi, Ethernet.

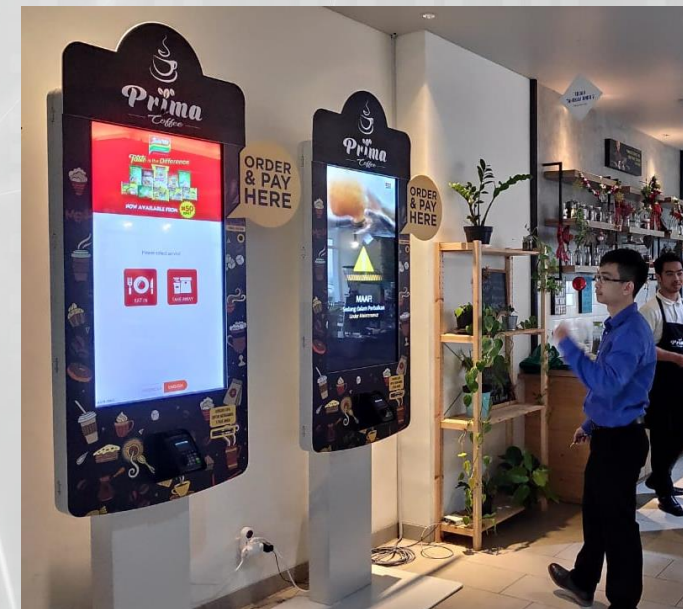


# DIGISIGN SELF ORDER KIOSK

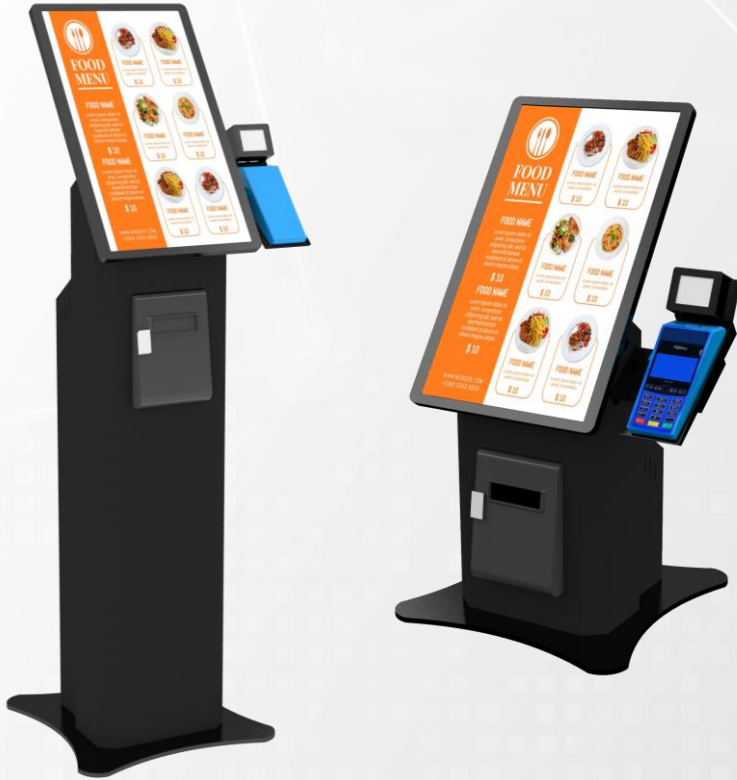


**Self-Order Kiosk** Enhance customer experience with our Self-order Kiosk solutions, offering seamless ordering, quick service, and innovative technology to streamline operations and empower users

- Available in 32 Inch
- Tempered Glass with 10 Point IR Touch/PCAP Touchscreen
- Commercial Grade Panel LCD
- Brightness : 400 - 450 nits
- Resolution : 1080x1920 FHD
- Operating System : Android / Windows
- Memory : 2 GB (Android) / 4 GB (Win)
- Storage : 8 GB (Android) / 120 GB (Win)
- Connection : USB, WIFI, LAN
- EDC Slot (EDC Machine provided by customer)
- Thermal Printer
- QR/Barcode Scanner



# DIGISIGN SMART ORDER KIOSK



**Digisign Smart Order Kiosk** is an intelligent device that we created to connect every part of the business, your operations and transactions.

- Two models available: Desktop Type & Stand Type.
- 21,5 Inch capacitive touch, QR code. Thermal printer.
- Attractive design & modern
- Iron frame finished with powder coating

## Specification:

- Android 11 RK3568
- 250 Nits Brightness
- Network : Wi-Fi, LAN
- Speaker: 5W\*2
- 10-Point capacitive touch
- Resolution 1920x1080
- Power Consumption 25W
- Ram/Memory : 2/16GB



## Suitable for:

Coffee Shop, Quick Service Restaurant, Café, Food & Beverage Business, etc.





### ▪ Description

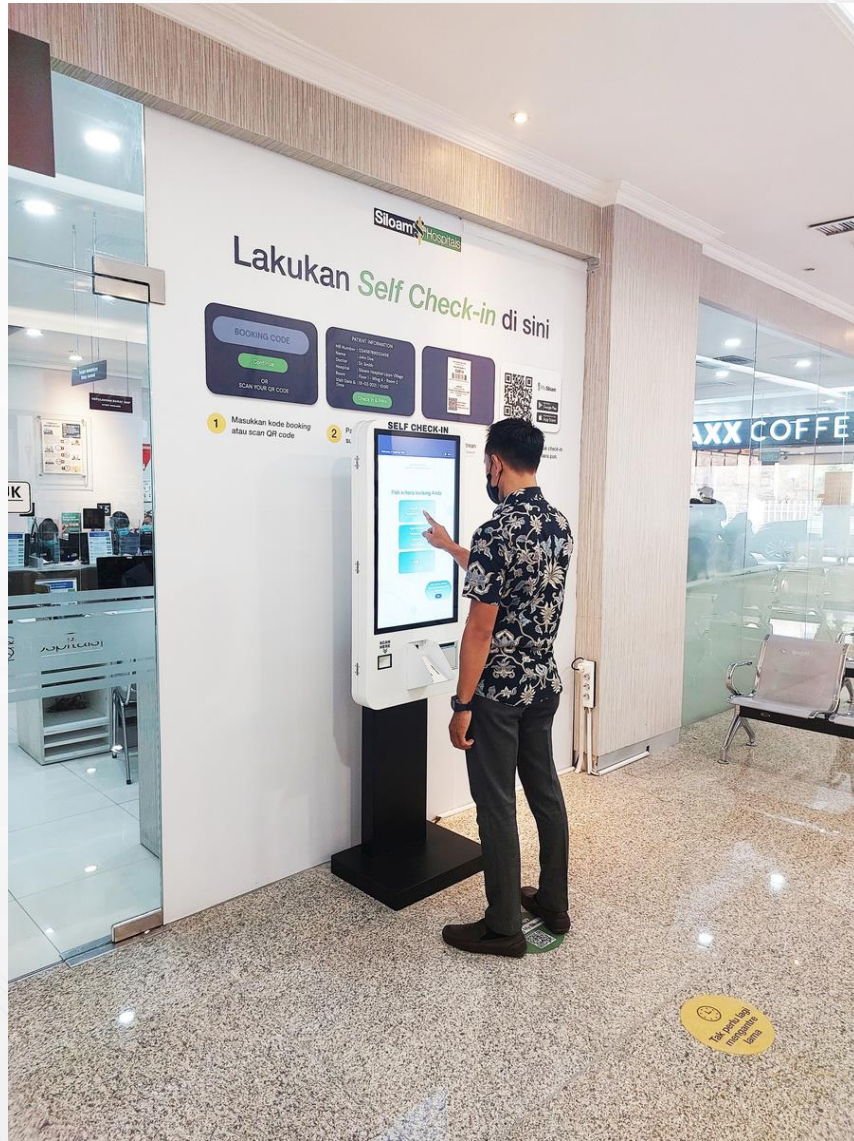
Screen Size	: 21,5 Inch with tempered glass
Resolution	: 1920x1080
Brightness	: 250 nits
CPU	: RK3568
RAM	: 2GB
Memory	: 16GB
OS	: Android 11
Touch type	: 10-Point capacitive touch
Network	: WIFI, LAN
Power Cons.	: 25W
Screen Size	: 512.88 x 308.9 x 33.5 mm
Printer	: Frontload Printer
QR Scanner	: 1D 2D code; Paper and mobile phone code scanning
Enclosure Material	is metal body finishing powder coating black mate & white

### ▪ Suitable for

Restaurant, Office Lobby, Bank, Government Office, Supermarket, Retail, Shopping Mall, Hotel, Hospital, Healthcare, School, University.

# Customer Reference

## Project Reference: Self Check In Kiosk for Siloam Hospitals



- Self Check In Kiosk 21,5 Inch & 32 Inch
  - Capacitive touchscreen
  - QR/Barcode Scanner
  - Thermal Printer 80mm
- **Suitable for:**  
Hospital, Government offices, Lobby, etc.



## Project Reference: Self Order Kiosk for Raindear Coffee & Kitchen



- Self Ordering Kiosk 32 Inch
  - IR touchscreen
  - QR/Barcode Scanner
  - Thermal Printer 80mm
  - EDC Machine Holder
- 
- **Suitable for:**  
Food & Beverages Business, Quick Service Restaurants, etc.

## Project Reference: Food Ordering Kiosk for Popeyes Indonesia



- Food Ordering Kiosk 24 Inch
  - IR touchscreen
  - QR/Barcode Scanner
  - Thermal Printer 80mm
  - EDC Machine Holder
- 
- **Suitable for:**  
Food & Beverages Business, Quick Service Restaurants, etc.





- Digital Printing Kiosk 21,5 Inch
- Capacitive touchscreen
- Tempered glass
- Printer A4
- **Suitable for:**  
Government offices, Lobby, etc.





EDC LCD Stand for MPM Finance. Produced in 2019, made from sturdy metal plate material, featuring a modern design.

## Production:



The background features a light gray grid pattern overlaid with various geometric shapes, including triangles and polygons, some of which are outlined in white. The overall aesthetic is clean and modern, typical of a corporate or technical presentation.

# **Other Type Kiosk Enclosure Development**

## Project Reference : Self Service Kiosk GO-JEK

Self-service kiosk for GO-JEK, produced in 2019, made from metal with a powder coating finish, featuring a modern and sturdy design.



### Production:



## Project Reference : Parking Kiosk



Parking Kiosk, produced in 2013-2014.  
Made from metal with a powder coating finish.

## Come & See Our Showroom



[www.innograph.com](http://www.innograph.com)



[www.displaystore.id](http://www.displaystore.id)



**PT. Inovasi Sarana Grafindo**

Jl. Lenteng Agung Raya No. 15 Jakarta Selatan 12610 Indonesia.

**[cs@innograph.com](mailto:cs@innograph.com) WA: [+62 815 1028 2828](tel:+6281510282828)**